



## ***2009-2010 Ohio Anemometer Loan Program (ALP) September 2009 Monthly Summary Report***

***Grant No. 08-01***

Prepared for:

Ohio Department of Development, Ohio Energy Office  
77 South High Street, 26<sup>th</sup> Floor  
Columbus, OH 43216

Ashtabula Port Authority  
4717 Main Avenue  
Ashtabula, OH 44004

and

Pettisville Local Schools  
232 Summit Street  
Pettisville, OH 43553

Prepared by:

Emily Sautter, Green Energy Ohio, Wind Program Coordinator  
Kemp Jaycox, Green Energy Ohio, Wind Program Manager  
7870 Olentangy River Road, Suite 209  
Columbus, OH 43235

---

### **1. Site Status**

Data collection has begun for the two recipients of the 2009-2010 Ohio Anemometer Loan Program! Installation of a 50 meter temporary meteorology tower for the Ashtabula Port Authority (tower located at the Ashtabula Waste Water Treatment Plant) was completed on September 7, 2009, and since commissioning there have been no data recovery issues. Installation of a second 50 meter temporary meteorology tower for Pettisville Local Schools was completed on September 17, 2009, and since commissioning there have been no data recovery issues for the site.

## ALP Monthly Summary Report, September 2009

Preliminary results for the month of September 2009 are summarized in Section 2. Specifications for the 2009-2010 ALP sites are included in Appendices A & B (Site Specification Logs).

### 2. Monthly Data Analysis Summary

Wind data collected at the ALP sites during the month of September 2009 are summarized below in Tables 1 and 2, and Figures 1 through 4.

**Table 1: Ashtabula Port Authority Summary of Monthly Average Wind Speed, Power Density and Turbulent Intensity.**

Channel	Height (feet)	Height (meters)	Boom Orientation (degrees)	Monthly Average Wind Speed (mph)	Monthly Average Wind Speed (m/s)	Cubic Average Wind Speed (mph)	Cubic Average Wind Speed (m/s)	Monthly Wind Power Density (W/m <sup>2</sup> )	Monthly Turbulent Intensity
1	98	29.9	135	9.9	4.4	12.1	5.4	94.8	0.22
2	98	29.9	315	10.0	4.5	12.3	5.5	99.9	0.23
3	131	39.9	135	11.0	4.9	13.5	6.0	130.6	0.20
4	131	39.9	315	11.1	5.0	13.7	6.1	135.7	0.19
5	164	50.0	135	12.0	5.4	14.6	6.5	167.2	0.18
6	164	50.0	315	12.0	5.4	14.8	6.6	172.2	0.17
<b>Shear Exponent</b>	<b>Channels</b>	<b>Exponent from Average of Wind Shear Column</b>	<b>Exponent from Average Wind Speed</b>						
	Exp1	1 to 3	0.3204	0.3539					
	Exp2	3 to 5	0.4051	0.3834					
	Exp3	2 to 4	0.3859	0.3660					
	Exp4	4 to 6	0.3567	0.3560					

**ALP Monthly Summary Report, September 2009**

**Table 2: Pettisville Summary of Monthly Average Wind Speed, Power Density and Turbulent Intensity.**

Channel	Height (feet)	Height (meters)	Boom Orientation (degrees)	Monthly Average Wind Speed (mph)	Monthly Average Wind Speed (m/s)	Cubic Average Wind Speed (mph)	Cubic Average Wind Speed (m/s)	Monthly Wind Power Density (W/m2)	Monthly Turbulent Intensity
1	102	31.1	180	10.5	4.7	12.6	5.7	107.1	0.17
2	102	31.1	332	10.5	4.7	12.6	5.6	106.6	0.18
3	131	39.9	180	11.3	5.0	13.5	6.0	131.1	0.16
4	131	39.9	332	11.2	5.0	13.4	6.0	127.0	0.16
5	164	50.0	180	12.2	5.5	14.5	6.5	160.1	0.15
6	164	50.0	332	12.0	5.4	14.2	6.4	153.1	0.15
<b>Shear Exponent</b>	<b>Channels</b>	<b>Exponent from Average of Wind Shear Column</b>	<b>Exponent from Average Wind Speed</b>						
Exp1	1 to 3	0.3010	0.2891						
Exp2	3 to 5	0.3896	0.3552						
Exp3	2 to 4	0.3234	0.2820						
Exp4	4 to 6	0.3444	0.3157						

Figure 1: Ashtabula Port Authority Daily Average Wind Speeds for September 2009

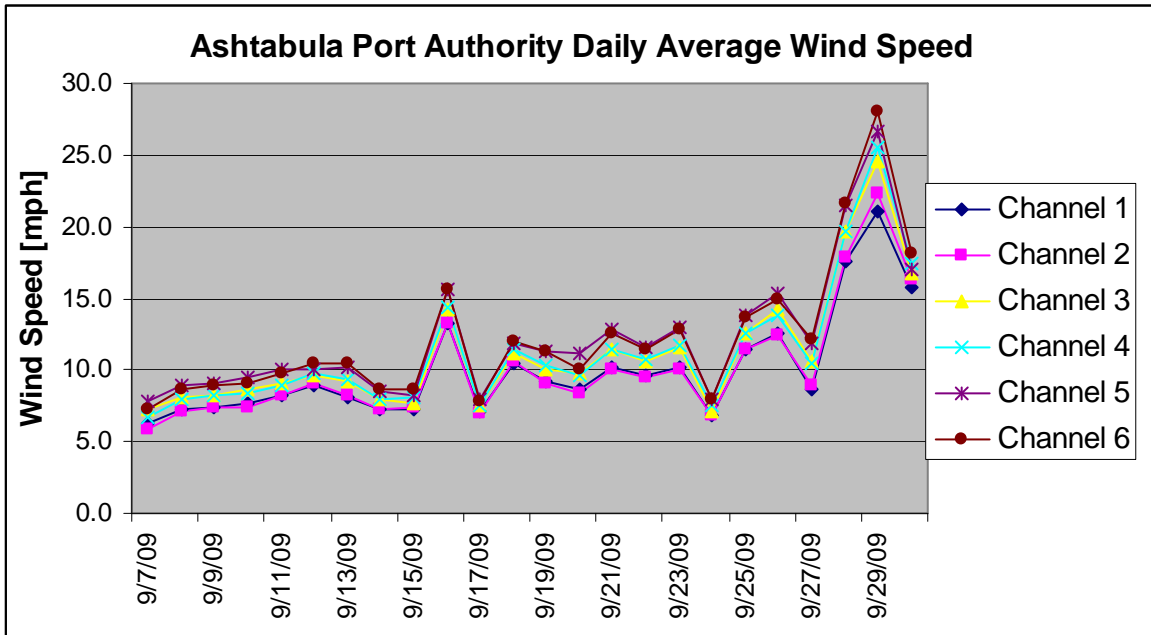


Figure 2: Ashtabula Port Authority Daily Average Wind Power Density for September 2009

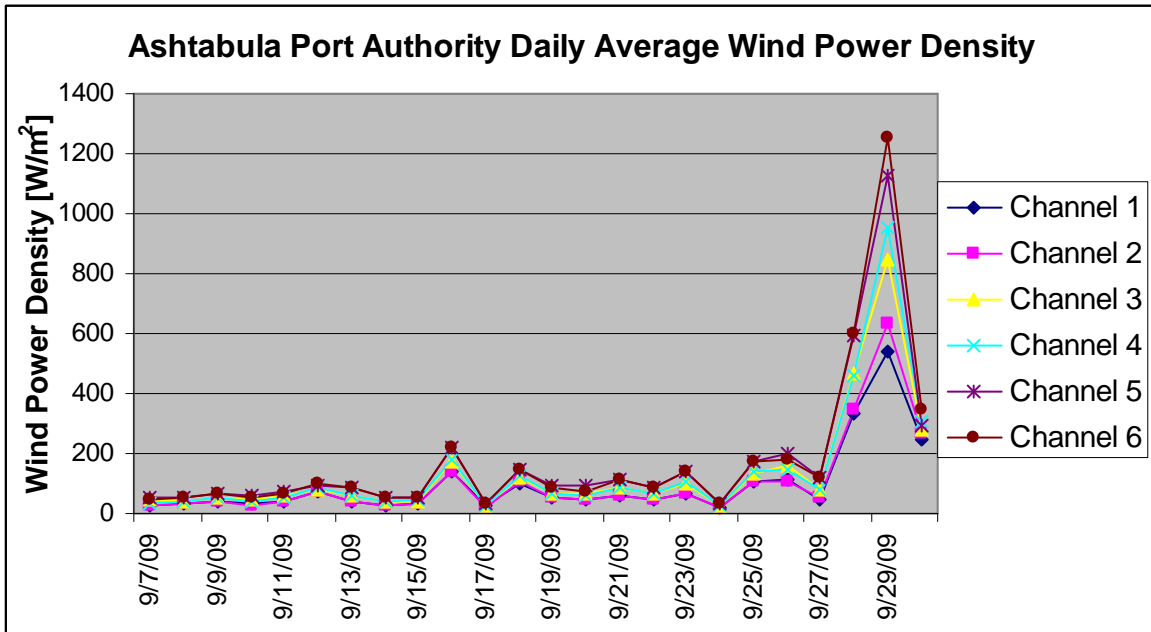


Figure 3: Pettisville Daily Average Wind Speeds for September 2009

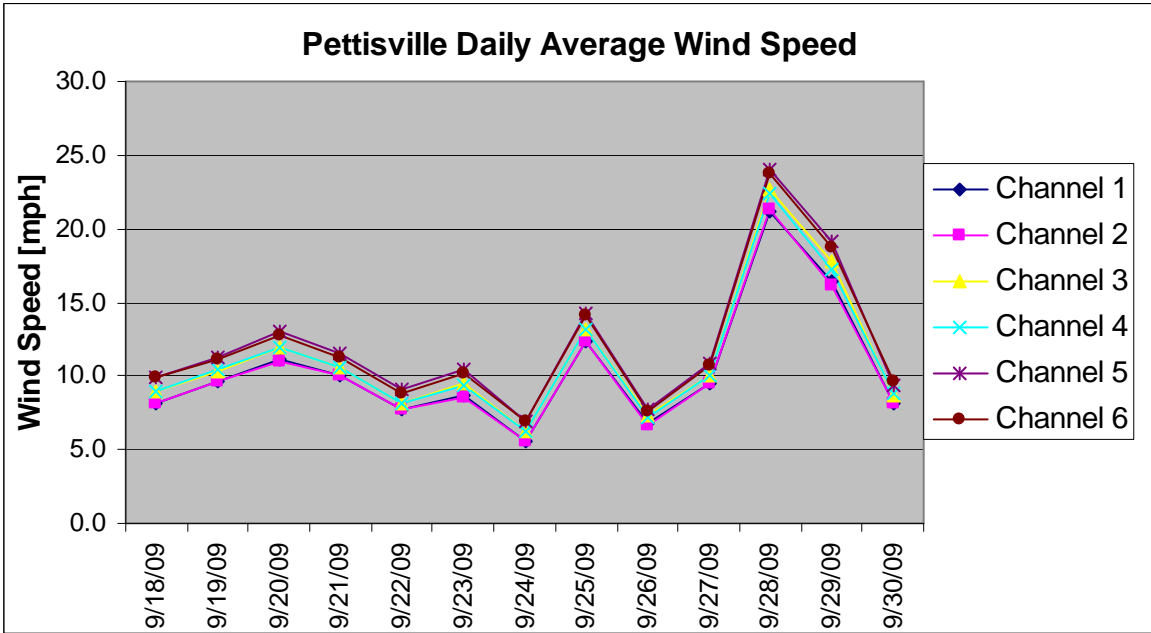
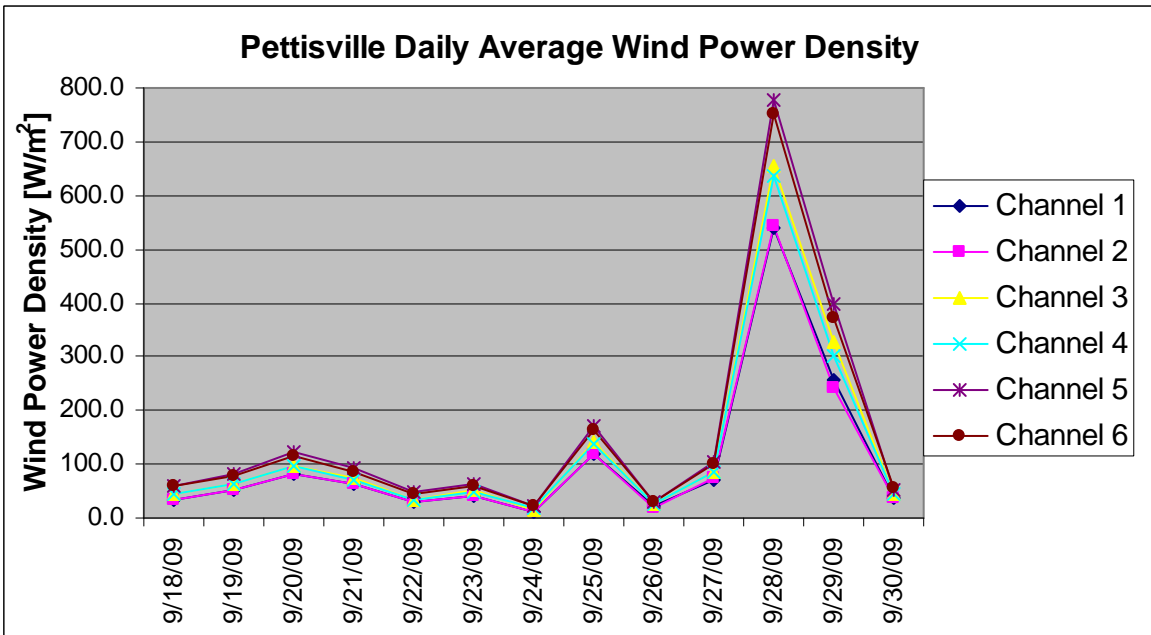


Figure 4: Pettisville Daily Average Wind Power Density for September 2009



## ALP Monthly Summary Report, September 2009

---

### APPENDIX A: SITE SPECIFICATION LOG – ASHTABULA PORT AUTHORITY

#### SITE

Site Name: Ashtabula Port Authority  
 Installation Date: September 7, 2009  
 Tower Owner: Ohio Department of Development (ALP)  
 Site Location (description): Tower located on grassy field on the southeast corner of the Ashtabula Water Treatment Plant property (303 Woodland Ave.). Tower is located approx. 205 feet due North of E. 5<sup>th</sup> St., and approx. 445 feet west of Parkgate Ave. (GPS coordinates): N 41° 54.112'; W 80° 47.162'  
 Ground Elevation: 625 ft  
 Prevailing Wind Direction: WSW (from OPSB Interactive Wind Resource Map)  
 Site Sponsor Contacts: Alicia McFarland, 440-992-7154 (Office), 440-813-3076 (Cell), [amcfarland@cityofashtabula.com](mailto:amcfarland@cityofashtabula.com)  
 Michael Mearini, 440-964-3030, 440-228-9217, [michaelm@cityofashtabula.com](mailto:michaelm@cityofashtabula.com)  
 Logger Lock Combination: 356

---

#### TOWER

FCC Tower Registration: None (50m XHD NRG Tall Tower) Tower ground assembly orientation: 0°; boom offsets: anemometers 135° & 315°; vanes 0°  
 Height of structure: 197 ft  
 Nominal Boom Heights: 30m, 40m, 50m

---

#### INSTRUMENTATION

**Data Logger:** NRG Symphonie, Serial Number 0348; Site Number 1234

#### Sensors:

Logger Channel	Instrument	Serial Number	Slope (mph)	Offset (mph)	Height (ft)	Boom Azimuth (degrees)	Deadband Azimuth (degrees)
1	NRG Max 40 Anemometer	15580	1.698	0.76	98	135	
2	NRG Max 40 Anemometer	15581	1.700	0.85	98	315	
3	NRG Max 40 Anemometer	15582	1.702	0.76	131	135	
4	NRG Max 40 Anemometer	15583	1.700	0.76	131	315	
5	NRG Max 40 Anemometer	15584	1.698	0.85	164	135	
6	NRG Max 40 Anemometer	15585	1.698	0.81	164	315	
7	NRG 200P Vane	None	0.351	0	134	360	360
8	NRG 200P Vane	None	0.351	0	161	360	360
9							
10	NRG Temp Sensor	None	0.244	-123.5	9	360	360

## ALP Monthly Summary Report, September 2009

---

### INCIDENT LOG:

August 20, 2009: Tower surveying and anchor installation completed. Shifted tower layout to extend N-S anchors for additional stability. Confirmed location of underground utilities along access drive (west of anchors) with Ashtabula Wastewater Treatment Plant and City of Ashtabula personnel. Tested two anchors in west quadrant using TRG dynamometer and small back hoe (3,500 lbs. of force); no pull-out was observed. Excavated 5 ft. x 5 ft. x 2 ft. deep area for base plate to meet engineer's specifications. Lined hole with geotechnical fabric and filled with 4.89 tons of #304 crushed stone. Compacted stone with TRG backhoe. (The Renaissance Group [TRG] & Green Energy Ohio [GEO]).

August 22, 2009: TRG pull-tested the six anchors in the south and west quadrants to 7,000 lbs. using TRG dynamometer and backhoe provided by Ashtabula Port Authority; no pull-out was observed. Based on soil conditions observed during anchor installation activities, the anchors in the north and east quadrants were not tested (TRG).

August 26, 2009: NRG 50 meter MET tower decommissioned from Cuyahoga County Fairgrounds in Berea, OH (TRG & GEO). Tower transported to Ashtabula by TRG.

August 27, 2009: Began tower layout and assembly activities, including sensor prep & testing, boom attachment and logger programming (TRG & GEO).

September 7, 2009: Tower, boom, and instrument assembly completed. Tower raised & straightened and guy wires tightened (TRG). Data collection for anemometers and vanes begins (TRG).

September 8, 2009: Temperature sensor installed and operating correctly.

September 28, 2009: Logger time clock reset from 10:40 to 11:40 to reflect correct time.

## ALP Monthly Summary Report, September 2009

---

### APPENDIX B: SITE SPECIFICATION LOG – PETTISVILLE

#### SITE

Site Name: Pettisville  
 Installation Date: September 17, 2009  
 Tower Owner: Ohio Department of Development (ALP)  
 Site Location (description): Tower located on Dean Genter's property (3902 County Rd. 19 Archbold, OH 43502-9761) in an alfalfa field situated immediately south of Oak Drive and Pettisville School. Tower is located approx. 750 feet South of County Rd. D, and approx. 900 feet East of County Rd. 19 (GPS coordinates): N 41° 31.613'; W 84° 13.561'  
 Ground Elevation: 755 ft  
 Prevailing Wind Direction: WSW (from OPSB Interactive Wind Resource Map)  
 Site Sponsor Contacts: Steve Switzer, 419-446-2705 (Office), 419.306.4168 (Cell), [pville\\_s@nwoca.org](mailto:pville_s@nwoca.org)  
 Donna Meller, 419-966-2702 (Cell), [pet\\_aca\\_dm@nwoca.org](mailto:pet_aca_dm@nwoca.org)  
 John Poulson, 419-572-6403 (Cell), [pet\\_aca\\_jp@nwoca.org](mailto:pet_aca_jp@nwoca.org)  
 Paul Bishop, 419-446-2705 x 208, [pet\\_aca\\_pb@nwoca.org](mailto:pet_aca_pb@nwoca.org)  
 Logger Lock Combination: 127

---

#### TOWER

FCC Tower Registration: None (50m XHD NRG Tall Tower) Tower ground assembly orientation: 45°; boom offsets: anemometers 180° & 332°; vanes 0°  
 Height of structure: 197 ft  
 Nominal Boom Heights: 31m, 40m, 50m

---

#### INSTRUMENTATION

**Data Logger:** NRG Symphonie, Serial Number 0348; Site Number 1235

#### Sensors:

Logger Channel	Instrument	Serial Number	Slope (mph)	Offset (mph)	Height (ft)	Boom Azimuth (degrees)	Deadband Azimuth (degrees)
1	NRG Max 40 Anemometer	15571	1.700	0.78	102	180	
2	NRG Max 40 Anemometer	15572	1.696	0.89	102	332	
3	NRG Max 40 Anemometer	15573	1.702	0.76	131	180	
4	NRG Max 40 Anemometer	15574	1.698	0.72	131	332	
5	NRG Max 40 Anemometer	15578	1.702	0.83	164	180	
6	NRG Max 40 Anemometer	15579	1.693	0.76	164	332	
7	NRG 200P Vane	None	0.351	0	134	360	360
8	NRG 200P Vane	None	0.351	0	161	360	360
9							
10	NRG Temp Sensor	None	0.244	-123.5	9	360	360

## ALP Monthly Summary Report, September 2009

---

---

### INCIDENT LOG:

September 16, 2009: Tower, boom, and instrument assembly completed (Wind Energy Services & Green Energy Ohio), could not raise tower due to unsafe windy conditions (crosswind > 10 mph).

September 17, 2009: Commissioned tower at Pettisville Schools (Wind Energy Services). Vanes and temp sensor wired incorrectly (white in positive; red in signal).

September 18, 2009: Instructed site sponsor John Poulson to correct wiring of vanes and temp sensor; red in positive; white in signal.